

# GUIDE TO MEASURING YOUR KITCHEN FOR NEW CABINETS

Renovating your kitchen can be one of the most rewarding projects you'll ever do. Measuring your kitchen properly - at the start - will ensure you get that rewarding feeling. Proper measurements will save you headaches, wasted time on rework and potentially lots of money. This guide will help you to measure your kitchen properly.

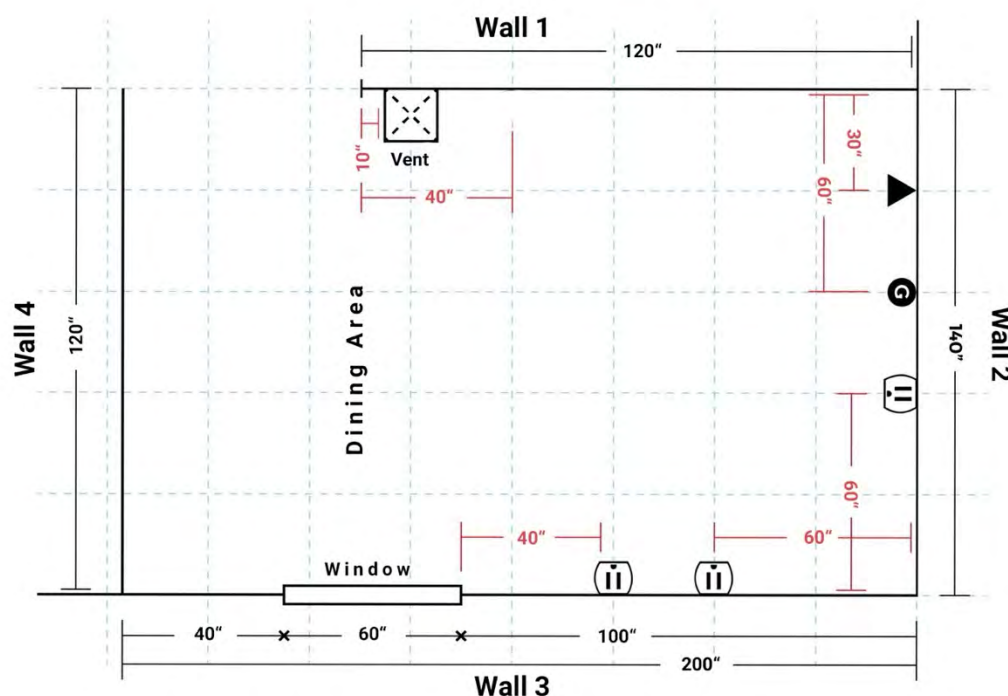
Note that even if you have a contractor, it is wise to take your own measurements. And **it's important that you record center points for appliances, gas lines, and plumbing, door openings and other obstacles, and that you measure twice for accuracy.**

**Simply follow this guide. Then submit the "Request A Free 3D Kitchen Design" form.**

We'll take it from there!

## FLOOR PLAN

Carefully configure the exact dimensions of your room. Your completed floor plan should resemble the diagram below; a hand-drawn diagram is fine. Please show exact locations of doors, windows, hood vents, exhaust, gas, water, and drain lines, outlets, switches, light fixtures and heat vents.



## Floor Plan Measurements

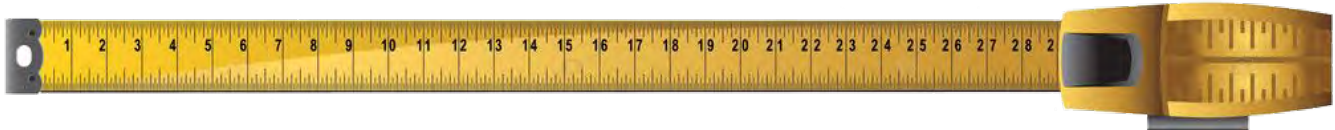
**Measure twice for accuracy.** Using a tape measure and graph paper (page 4), measure your room using the following steps.

### Horizontal Measurement

- Measure from wall to wall at 36" height.
- Measure from corner to window or door opening.
- Measure across opening from trim edge to trim edge.
- Measure from edge of trim to far wall. Compare sum of #2, #3, and #4.
- Mark exact location of water, drain, gas lines, electrical outlets, and switches on drawing.
- Measure from wall to wall above window and compare to #1.

### Vertical Measurement

- Measure from floor to windowsill.
- Measure from windowsill to top of window.
- Measure from top of window to ceiling.
- Measure from floor to ceiling—compare to sum of #7, #8, and #9.



## Pro Tips for Measuring Your Kitchen

Precise measurements are crucial to the accuracy of your room design. These tips will help ensure you end up with accurate measurements.

### A. Length from finished wall to finished wall

Measure the room from finished wall to finished wall. Do not measure from baseboard to baseboard molding. Record this information. If new construction, add for drywall.

### B. Corners to doors/windows

Measure from corners to any windows or doors. Stop at the outside of the window's (or door's) trim edge. Repeat for the entire room. Record the information.

### C. Window and door openings

Measure width and height of each window from outside trim edge to outside trim edge. Record the information. Then do the same for each door and record the information. If you plan to replace the trim or the window, be certain you use the new dimensions as your measurements.

#### **D. Floor to ceiling, above and below windows**

In the event the floor is uneven (most are due to settling), measure from ceiling to floor in several spots. Measure from the floor to the bottom on the windowsill, and from the top of the window trim to the ceiling. Record all of this information.

#### **E. Sink and appliances**

Measure all other permanent items, such as appliances, tables, or sinks. Record the information. Measure distance from corners to any appliance, stopping at the outside of the appliance, repeating around the room. Note the location of electrical outlets, light switches, and gas and water lines, any of which may dictate the placement of cabinetry. And, note all floor and/or wall vents.

#### **F. Soffit area**

Space between wall cabinets and countertops should be no less than 18". If the kitchen has soffits, note this in the drawing. Measure soffit depth to ensure that cabinets do not extend out from existing soffits. Record this information.

**TIP:** Walls can be crooked. Therefore, when measuring along a wall, also measure the same space about two feet away from the wall. Also, measure wall length about 36" above the floor, as well as on the floor. If there is unevenness, make a note in your Kitchen Layout Grid. This approach will result in the most accurate kitchen design.

**TIP:** If you are getting new appliances, remember to record the brand and model number for each.

**TIP:** Remember to measure the height of your refrigerator to determine the correct height for a wall cabinet above the refrigerator. For accuracy, be certain to measure to the top of the refrigerator door hinge.

## Appliance and Fixture Information

List desired or existing appliances on your drawing. Be sure to indicate 220 volt outlets, wall mounted appliances and fixtures, telephone, and cable locations. Also, note gas lines and appliance locations.

	Type	Size	Which Wall Does It Go On?
Refrigerator			
Range			
Cooktop			
Exhaust Hood			
Wall Oven			
Microwave			
Dishwasher			
Sink			
Disposal			
Compactor			
Freezer			
Other			